



LIGHT WEIGHT DEFLECTOMETER TERRATEST 9000 LWD

✓ ASTM E2583 (USA)

✓ European Union CEN ICS 93.020

✓ BS EN 1924-2 (United Kingdom)

✓ UNI11531-1 (ANAS ITALIA)



ALL in ONE

NO NUCLEAR – NO PROBLEM

The portable Light Weight Deflectometer **TERRATEST 9000 LWD** enhances your quality control process with precision and ease. Designed for evaluating the compaction quality of unbound and partially bound soil layers, the TERRATEST 9000 LWD is a non-nuclear testing device.

This "**All-in-One**" solution offers exceptional versatility through its high-precision center geophone, two additional geophones, interchangeable load plate diameters, optional falling weights, and adjustable drop heights, all supported by an accurate load cell.

Testing is conducted via the intuitive **TERRATEST-LWD smartphone app** for Android. No additional electronic equipment is required, and all test data is conveniently stored directly on your smartphone.

Benefits of Light Weight Deflectometer TERRATEST 9000 LWD

- ✔ Stiffness and compaction quality control with only ONE device
- ✔ Light Weight Deflectometer TERRATEST 9000 LWD operates without using nuclear material
- ✔ A single person can test the compaction quality in less than one minute without using a counterweight like a truck
- ✔ Immediate result of test data in construction site

Light Weight Deflectometer TERRATEST 9000 LWD meets the following international specifications

- ✔ ASTM E2583
- ✔ European Union CEN ICS 93.020
- ✔ BS EN 1924-2 (UK)
- ✔ UNI11531-1 (ANAS ITALIA)



MADE IN
GERMANY

ALL in ONE

Light Weight Deflectometer

HS Code 90 24 80 19



ALL in ONE

Smartphone holder
for APP service

Adjustable device
to change the falling height

Additional falling weights
each 5 kg/11 lbs

10 kg/22 lbs falling weight

Buffer elements

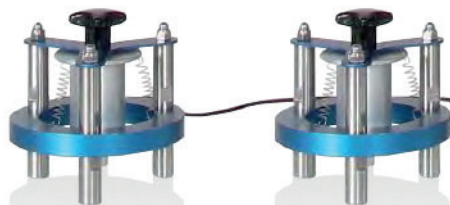
High precision load cell to measure
the impact load time history and peak
magnitude

Measuring electronic with Magic Eye to
pilote the test procedure via Bluetooth®

Central geophone measures deflection
time history and peak value using a hole
in the load plate



200 mm/7.8" load plate



Two satellite geophones

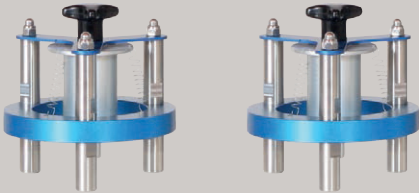


Load plate „DUO-SWITCH“ to
change the load plate diameter
300/150 mm resp. 11.8"/5.9".
100 mm/3.9" load plate included.

OPTIONAL ACCESSORIES

EXTERNAL GEOPHONES

Set of two external geophones
range 100 - 2200 micro
HS Code 90 24 90 00



SET OF TWO ADDITIONAL FALLING WEIGHTS

(5 kg / 11 lbs each) to perform 15
kg or 20 kg (resp. 33 lbs / 44 lbs)
HS Code 90 24 90 00



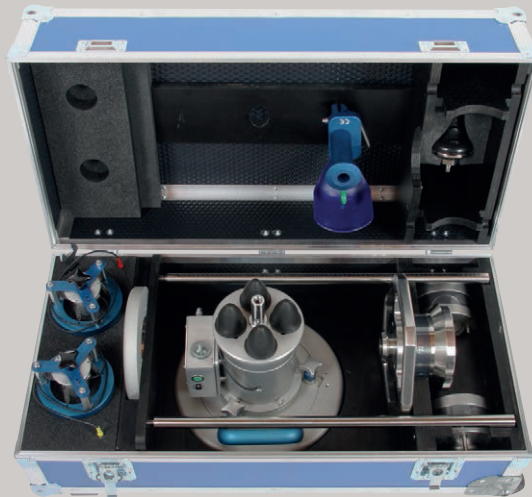
"CARRELLO"

Mobile measuring system
with fork system to perform tests
in a large construction site
HS Code 90 24 90 00



Trolley "VENEZIA"

Transport box
800 x 400 x 350 mm, 19,3 kg, 58 kg when complete
31,2" x 23,6" x 40,25", 42,6 lbs, 127,9 lbs when complete
For secure transportation and storage with wheels for
easy transportation and positioning
HS Code 90 24 90 00



LOAD PLATE
200 mm
Additional
load plate
Ø 200 mm / 7,8"
HS Code 90 24 90 00



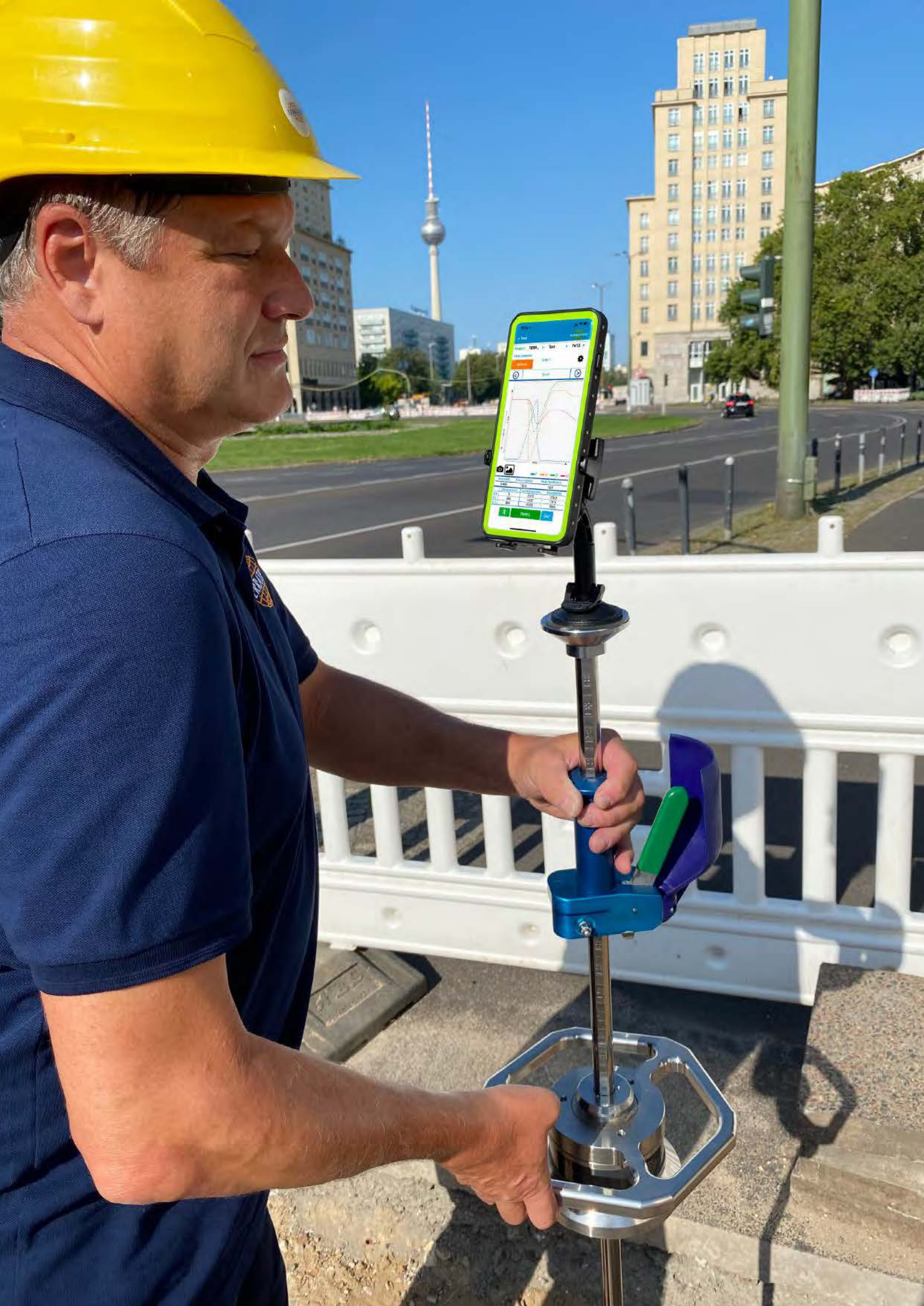
Wheels for
Transport box
"VENEZIA"
"Ready for
construction site"
HS Code 90 24 90 00



External charging
device for
9000 LWD battery
incl. 4 pieces
extra batteries
HS Code 90 24 90 00



**MADE IN
GERMANY**





ALL in ONE

Weight of device:	26 kg/57,3 lbs
Height of basic device:	1.400 mm/54.6"
Max. drop height:	900 mm/35.1"
Drop Falling weights:	10 kg/22 lbs, optional 15 kg/33 lbs, 20 kg/44 lbs
Loading range:	0–15 kN (3370 lbf) peak load using optional weight 20 kg/44 lbs
Load pulse:	20–40 ms
Load plate diameters:	100 mm/3.9", 150 mm/5.9", 300 mm/11.8", optional: 200 mm/7.9"
Range of load cell:	0–25.0 kN (0–5,500 LBF)
Accuracy of load cell:	0,15 %
Sensor:	Geophone
Sensor range:	0,1–2,2 mm
Calibrated range:	0,1–1,2 mm
Optimum range:	0,3–1,2 mm
Number of geophones:	1 central geophone standard, 2 satellite geophones optional
Transportbox „Venezia“:	800 x 400 x 350 mm, 19,3 kg, 58 kg when complete 31,2" x 23,6" x 40,25", 42.6 lbs, 127.9 lbs when complete

TERRATEST LWD PC-Software for analysis of test data TERRATEST App for Android



TERRATEST LWD GMBH
Dianastraße 4
16515 Oranienburg
Germany

Telephone: +49 178 5454390

info@terratest-lwd.com
www.terratest-lwd.com

 **MADE IN GERMANY**

